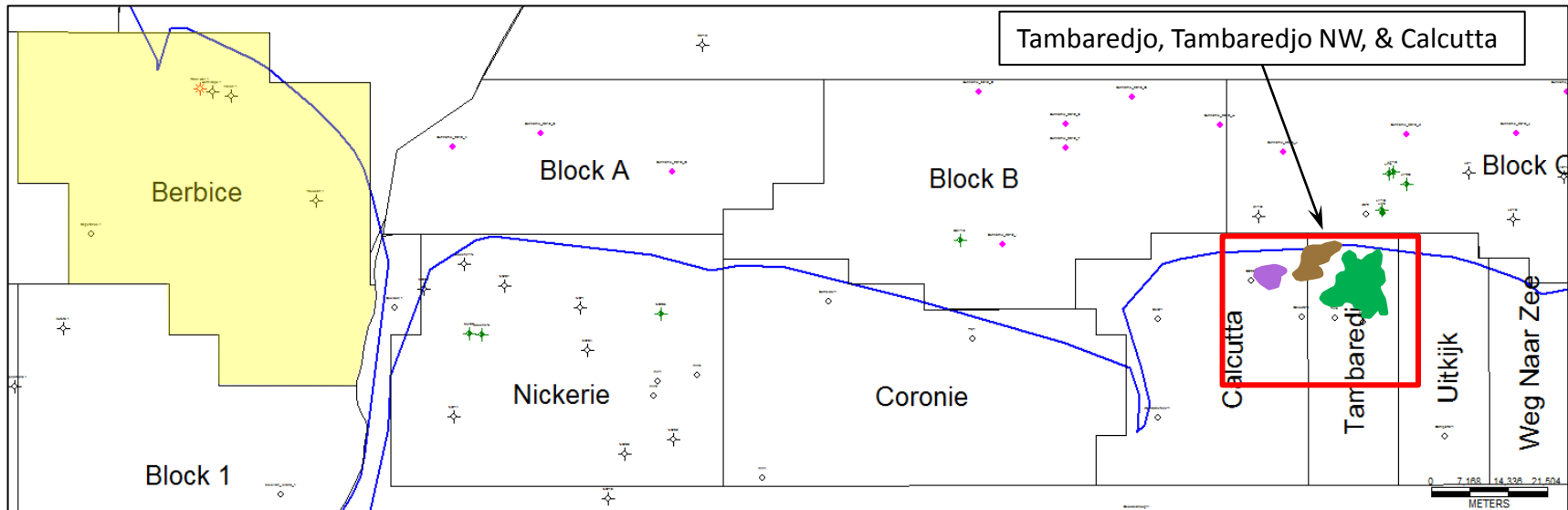


Berbice Block October 2020



Proximity of CGX's Berbice Block to Tambaredjo/Calcutta producing oilfields onshore Suriname



- Evidence that oil has migrated onshore Guyana and been trapped
 - Presence of Tambaredjo/Calcutta onshore heavy oilfields in coastal Suriname
 - Source for Tambaredjo oil is the same as that of offshore wells in the Basin
 - Reported oil and gas seeps in Guyana
 - Pay on logs and oil shows in cuttings from previously drilled Berbice wells
 - Large structures and stratigraphic changes on Berbice provide hydrocarbon traps
- Geochemical survey completed in December 2018
 - Shows thermogenic hydrocarbons in samples

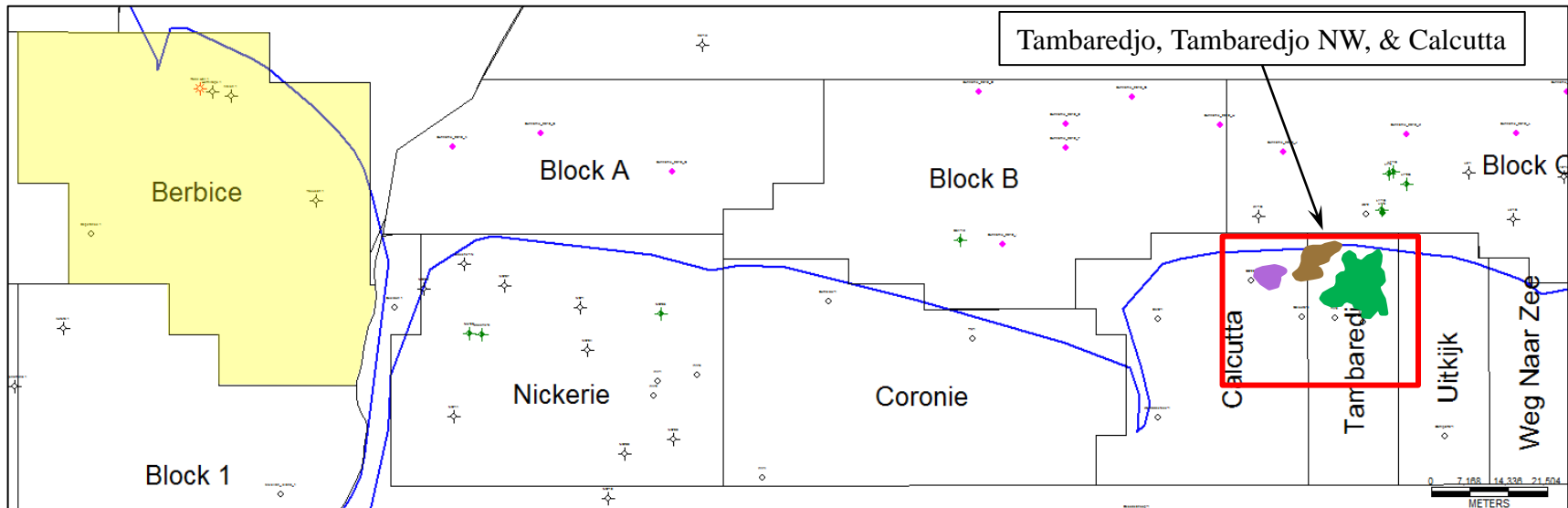
Tambaredjo & Calcutta – Onshore Suriname

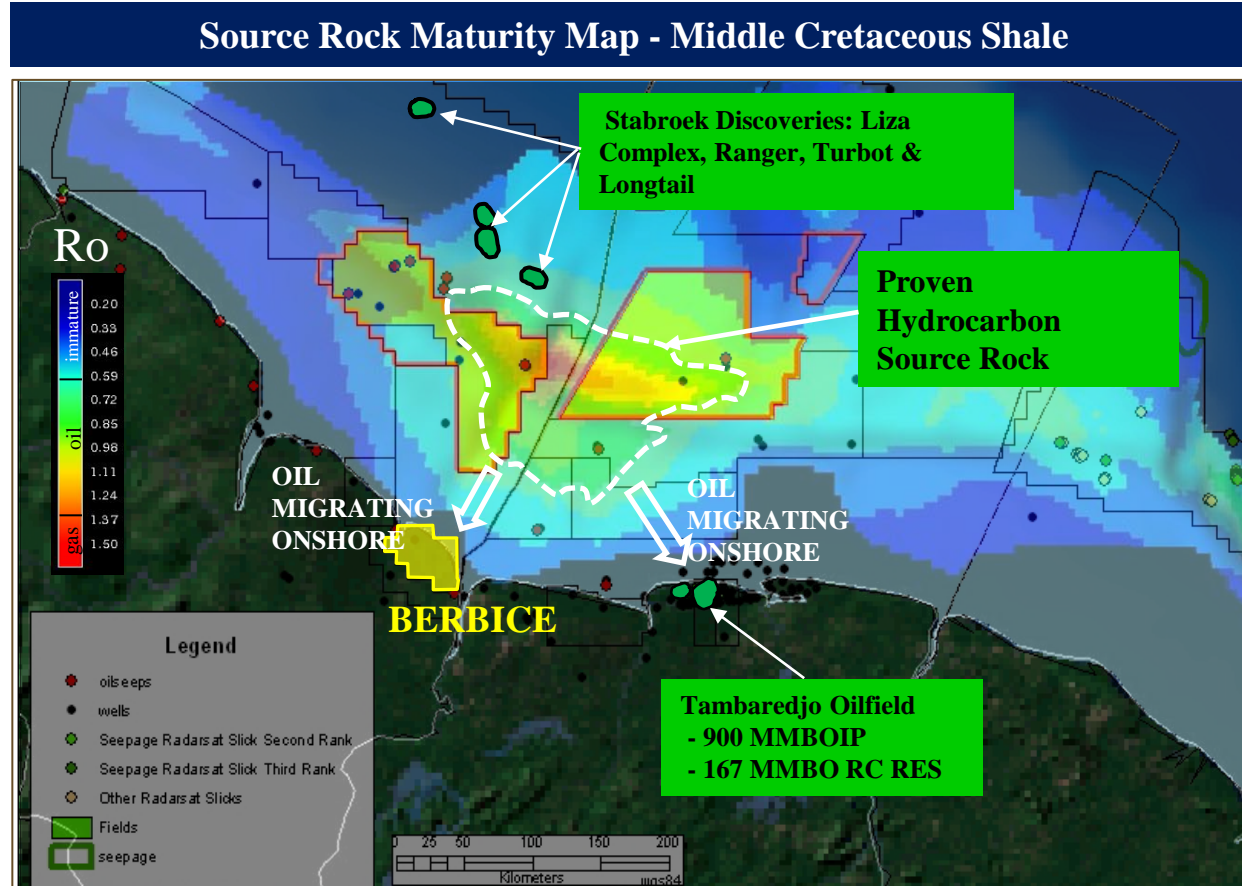
- Discovered in 1965 when oil was encountered at 450 ft while drilling for water in Calcutta schoolyard
- 170 km East of Berbice Block
- 3 onshore oil fields (oil in place: ~1 billion bbls)
- >1,600 production wells



Finding of Tambaredjo/Calcutta in Suriname

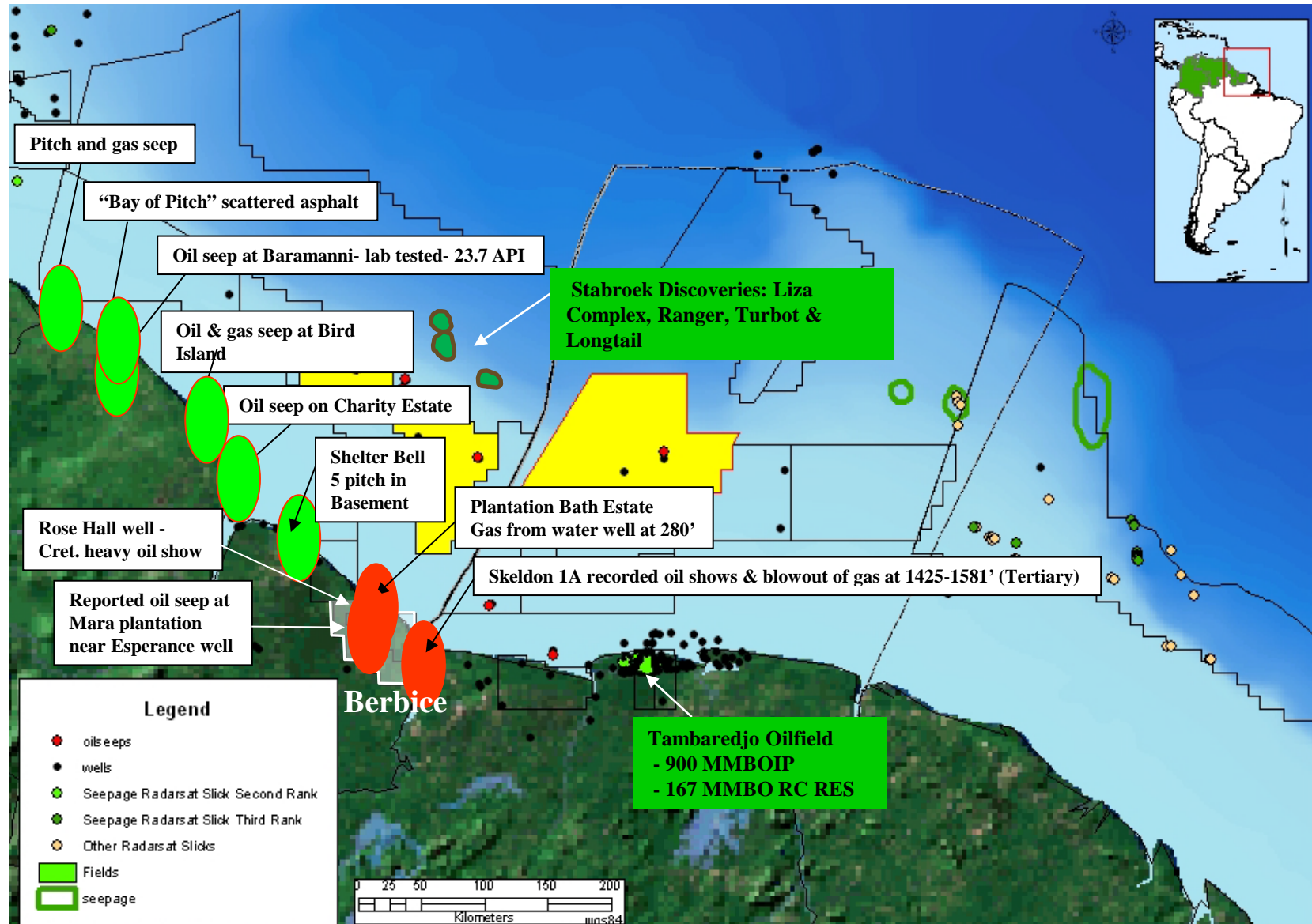
Proximity of CGX's Berbice Block to Tambaredjo/Calcutta producing oilfields onshore Suriname





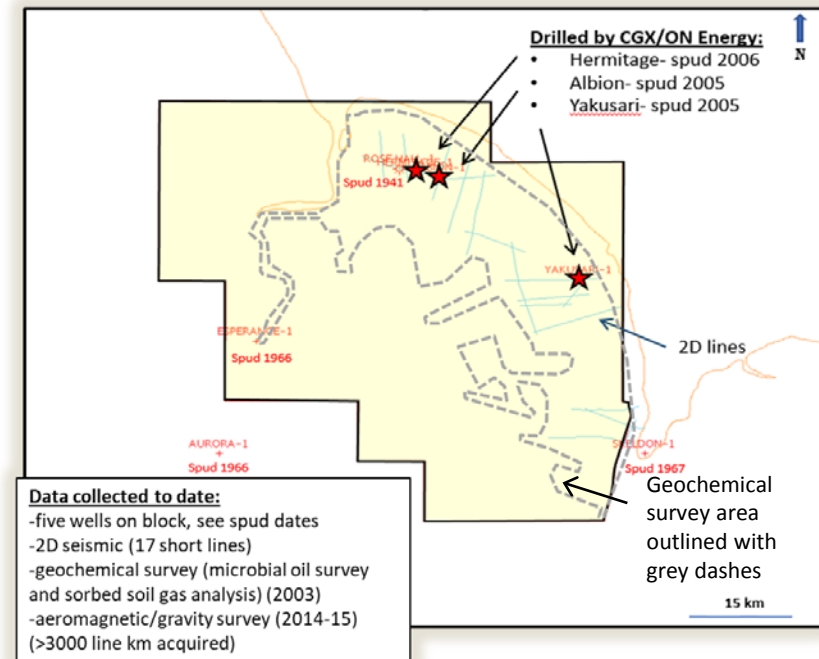
- The oil in Tambaredjo/Calcutta has been chemically traced to offshore source rock
 - Therefore, oil has migrated 150km onshore from the kitchen to Tambaredjo
- Oil has migrated onshore to Berbice as well
 - Oil and gas seeps as well as shows on Berbice supports this

Oil & Gas Seeps – Onshore Guyana



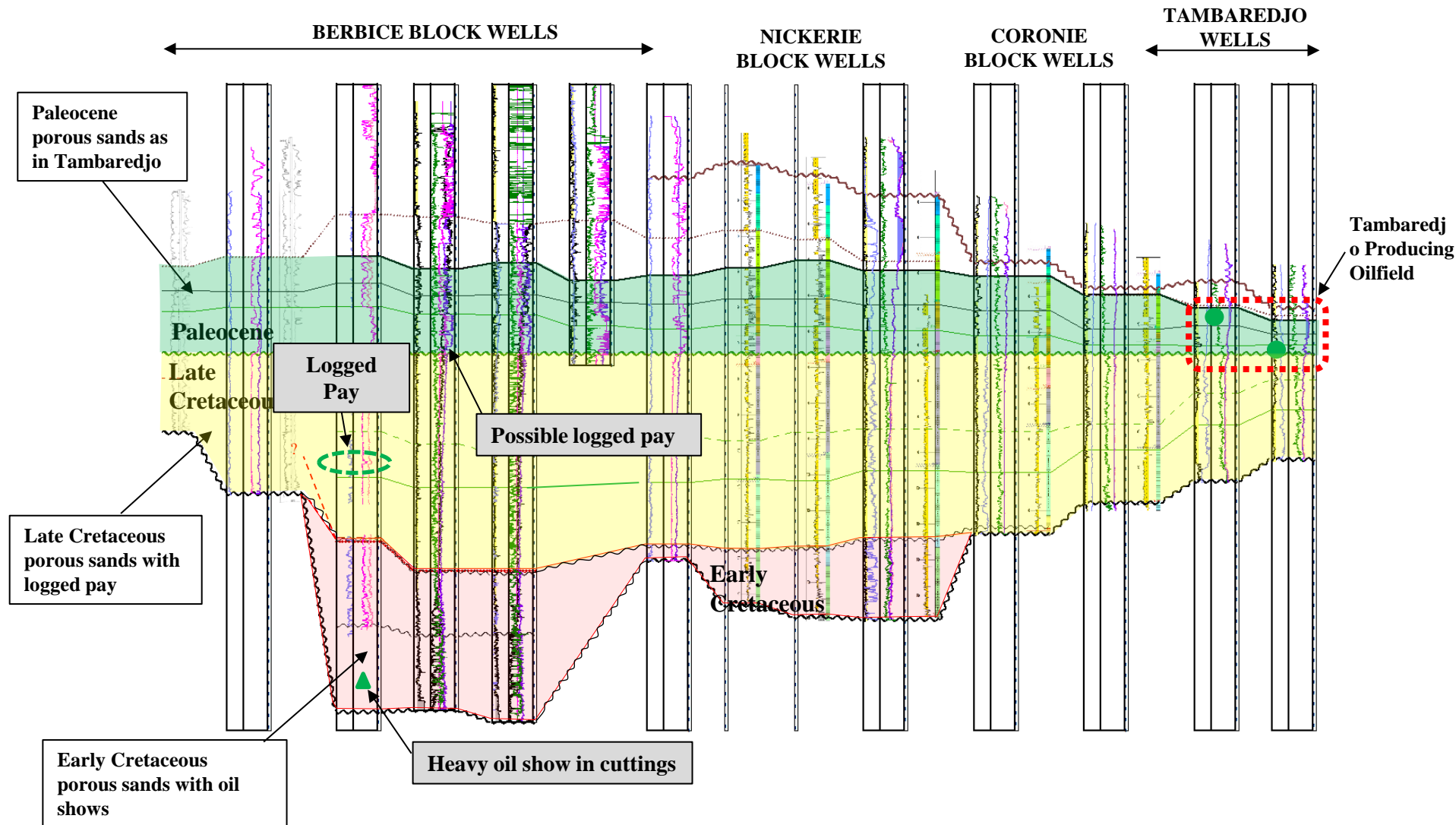
Berbice Block – Exploration History

- CGX through ON Energy Inc. drilled 3 wells on the block
 - Albion-1 (2005): Found reservoir quality sands and has possible oil shows
 - Yakusari-1 (2005): Found reservoir quality sands and possible trace hydrocarbons.
 - Hermitage-1 (2006): Found reservoir quality sands and has possible oil shows
- 2 wells drilled by prior operators
 - Rose Hall-1 (1942): Good oil shows
 - L'Esperance-1 (1966): Sands & no shows
- 2D seismic acquired and processed: 17 lines
- Microbial geochemical survey in 2003
- Aeromagnetic and gravity acquired in 2015 & 16
- Geochemical Soil Survey in 2018



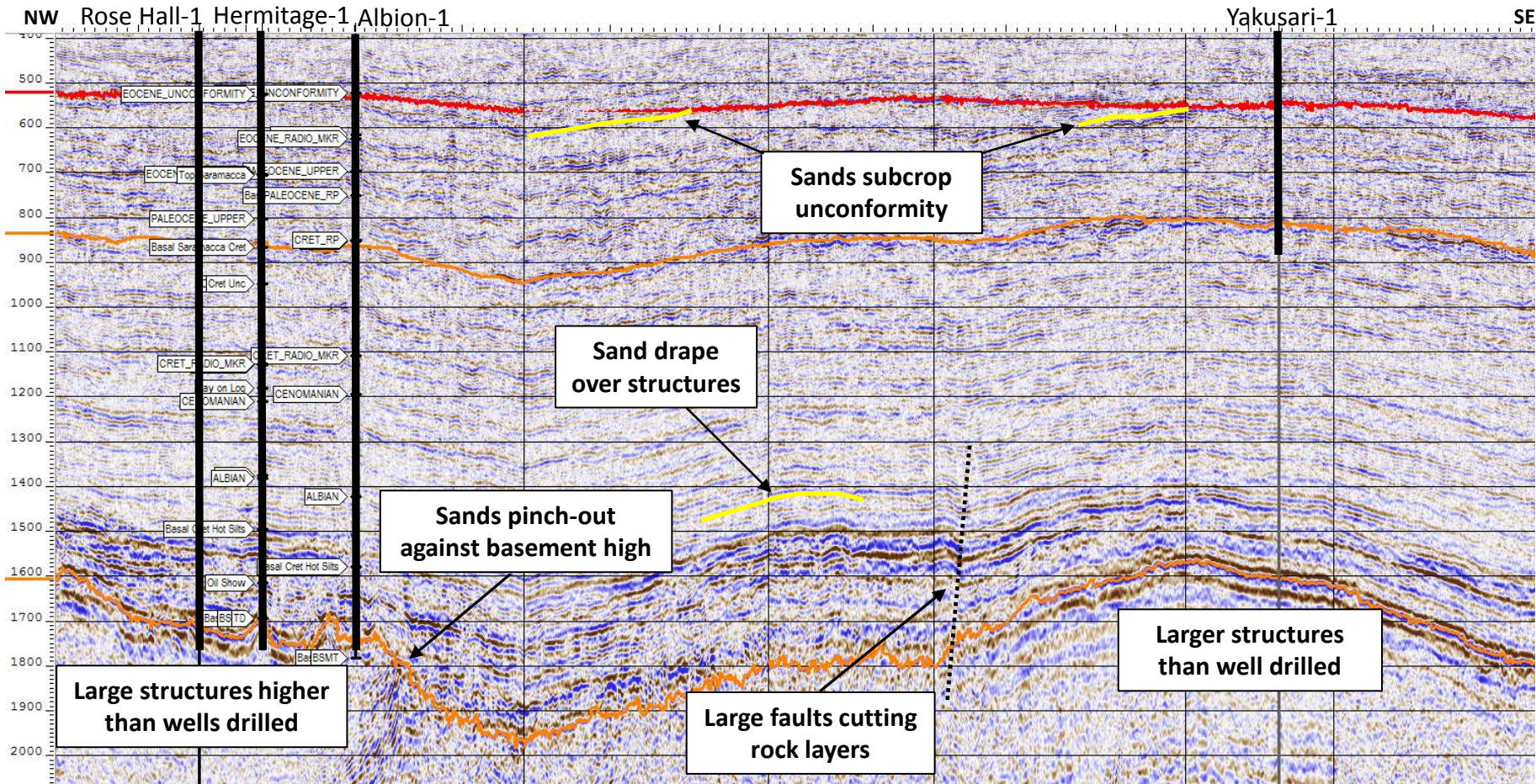
Logged Pay and Oil Shows – Berbice Wells

Well Log Correlation - Berbice to Tambaredjo



Potential Hydrocarbon Traps – Berbice Block

2D Seismic Cross-Section (NW/SE) – Berbice Block



- 2D seismic indicates large structures and pinch-outs of potential reservoirs suggesting traps for hydrocarbons

Corporate Office

333 Bay Street, Suite 1100
Toronto, ON, Canada M5H 2R2
+1 (416) 364-5569

Houston Office

810 Highway 6 South, Suite 240
Houston, TX, USA 77079
+1 (832) 300-3200

Guyana Office

234 Lance Gibbs and Irving
Streets, Queenstown,
Georgetown, Guyana
+011 (592) 227-0521

